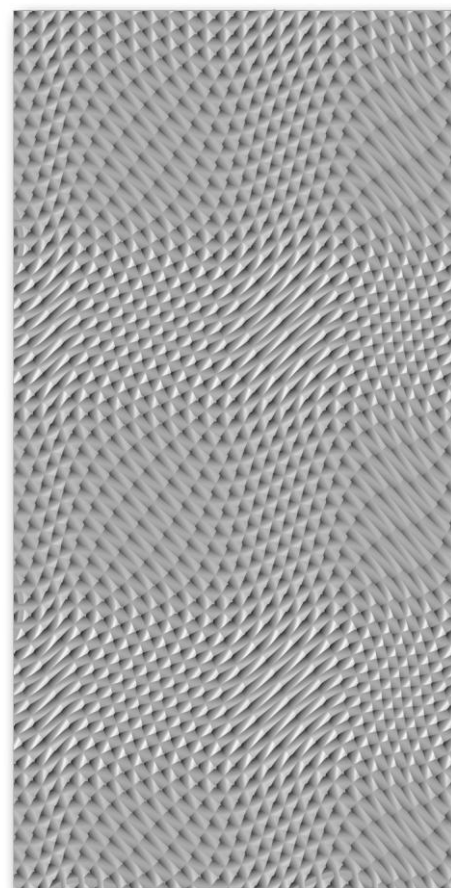
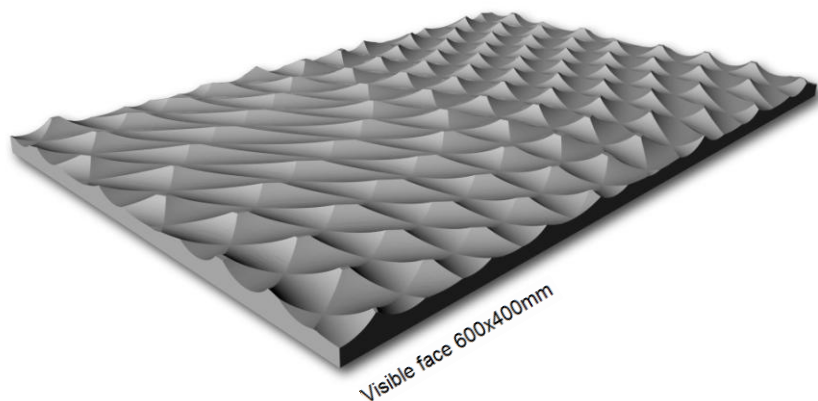


**REFERENCE** PD041 PUNXA I  
**DESCRIPTION** Decorative panels



**GENERAL FEATURES**

Materials	MDF waterproof D-s2,d0 MDF fireproof B-s2,d0 (with red or natural core) MDF coloured throughout D-s2,d0 Plywood
Thickness (mm)	19mm to 22mm (MDF) For other materials and thickness, contact Decustik
Machining depth (mm)	9,0
Approximate weight. (kg/m <sup>2</sup> )	15,0 (MDF 19mm) 17,5 (MDF 22mm)
Formats (mm)	Depending on the project. Maximum size 3000x1500
Finishing	With no finish                      Varnished                      Lacquered RAL / NCS For other finishing, contact Decustik

**APPLICATION**

Wall coverings

Straight visible	
Loose tongue	