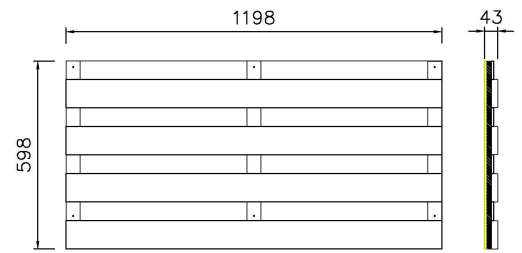


**REFERENCE** PE024  
**DESCRIPTION** Slatted panel with 90x20mm slats spaced 60mm

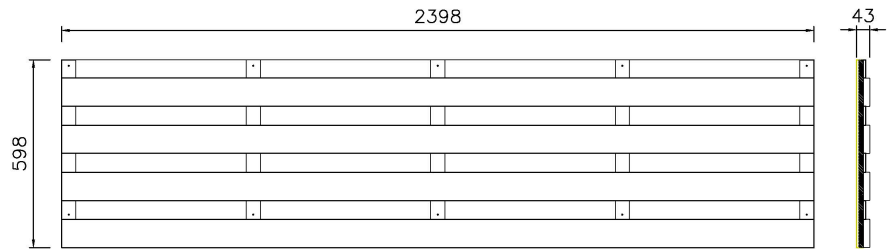
**ACOUSTIC FEATURES**

Slat section (mm) 90x20  
Slat spacing (mm) 60  
Panel thickness (mm) 43  
Perforated area (%) 36



**Acoustic absorption**

Plenum	$\alpha_w$	NRC	Class
19mm	0,55	0,55	D
40mm	0,60	0,60	C
40mm (+)	0,60	0,65	C
200mm	0,55	0,55	D
200mm (+)	0,60	0,60	C



Mineral Wool (integrated) 15 mm 70 kg/m<sup>3</sup>  
Additional Mineral Wool inside the plenum (+) 45 mm 21 kg/m<sup>3</sup>

**GENERAL FEATURES**

**Base material of slats**

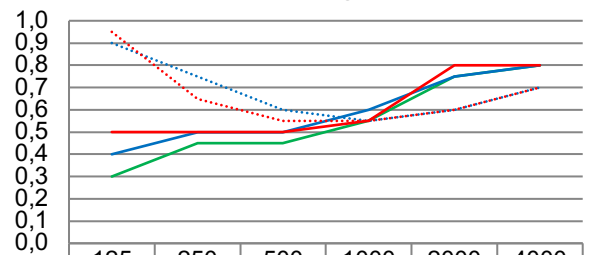
MDF standard D-s2,d0  
MDF fireproof B-s2,d0  
Solid wood

**Base material of crossies**

MDF standard D-s2,d0  
MDF fireproof B-s2,d0

For other materials and thickness, contact DECUSTIK

**Absorption according UNE-EN ISO 354**



	125	250	500	1000	2000	4000
— Plenum 19mm	0,30	0,45	0,45	0,55	0,75	0,80
— Plenum 40mm	0,40	0,50	0,50	0,60	0,75	0,80
⋯ Plenum 40mm (+)	0,90	0,75	0,60	0,55	0,60	0,70
— Plenum 200mm	0,50	0,50	0,50	0,55	0,80	0,80
⋯ Plenum 200mm (+)	0,95	0,65	0,55	0,55	0,60	0,70

Frequency [Hz]

**Weight approx. (kg/m<sup>2</sup>)**

10,7 (MDF Standard)  
12,2 (MDF Fireproof)  
10,1 (Spruce)  
10,3 (Pine)  
11,0 (Oak)

**Sizes (mm)**

For wall and ceiling  
2400x600 (2398x598 real)  
1200x600 (1198x598 real)  
Designed to install with a 2mm clearance between panels  
For other dimensions, consult

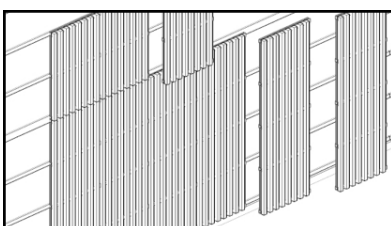
**Finishing**

Varnished natural wood veneer  
Solid varnished natural wood  
CPL Lacquered  
CPL decorative design  
For other finishes, consult

**APPLICATION**

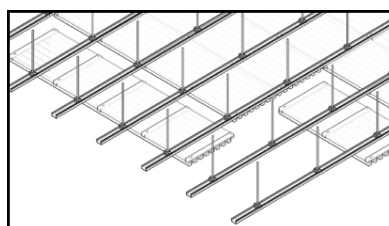
**Wall coverings**

Screwed to batten



**Ceilings**

Screwed to T60 profile



**Important note:** Due to the weight of some models and especially in ceiling mounting, it is essential to ensure that the structure and anchors support the weight of the panels.