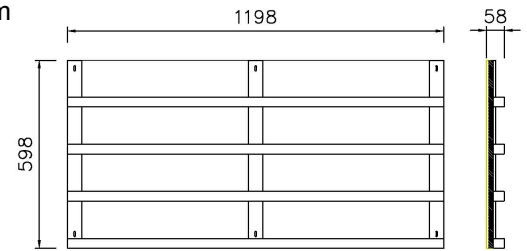


**REFERENCE** PE014  
**DESCRIPTION** Slatted panel with 31x35mm slats spaced 119mm

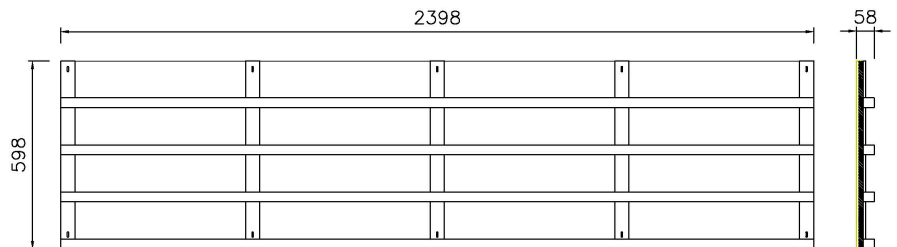
**ACOUSTIC FEATURES**

Slat section (mm) 31x35  
Slat spacing (mm) 119  
Panel thickness (mm) 58  
Perforated area (%) 72



**Acoustic absorption**

Plenum	$\alpha_w$	NRC	Class
19mm	0,70	0,75	C
40mm	0,80	0,80	B
40mm (+)	0,80	0,85	B
200mm	0,80	0,80	B
200mm (+)	0,80	0,85	B



Mineral Wool (integrated) 15 mm 70 kg/m<sup>3</sup>  
Additional Mineral Wool inside the plenum (+) 45 mm 21 kg/m<sup>3</sup>

**GENERAL FEATURES**

**Base material of slats**

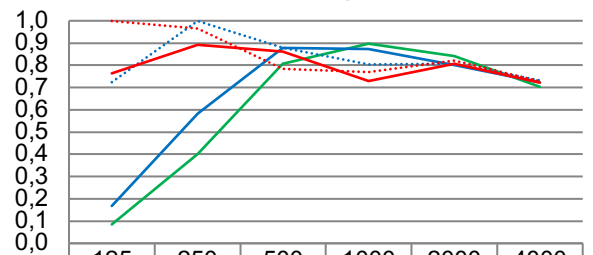
MDF standard D-s2,d0  
MDF fireproof B-s2,d0  
Solid wood

**Base material of crosssties**

MDF standard D-s2,d0  
MDF fireproof B-s2,d0

For other materials and thickness, contact DECUSTIK

**Absorption according UNE-EN ISO 354**



	125	250	500	1000	2000	4000
— Plenum 19mm	0,09	0,40	0,81	0,90	0,84	0,70
— Plenum 40mm	0,17	0,58	0,88	0,87	0,80	0,72
⋯ Plenum 40mm (+)	0,72	1,00	0,88	0,80	0,81	0,73
— Plenum 200mm	0,77	0,89	0,86	0,73	0,81	0,72
⋯ Plenum 200mm (+)	1,00	0,96	0,78	0,77	0,82	0,73

Frequency [Hz]

**Weight approx. (kg/m<sup>2</sup>)**

7,4 (MDF Standard)  
8,4 (MDF Fireproof)  
6,9 (Spruce)  
7,0 (Pine)  
7,8 (Oak)

**Sizes (mm)**

For wall and ceiling  
2400x600 (2398x598 real)  
1200x600 (1198x598 real)  
Designed to install with a 2mm clearance between panels  
For other dimensions, consult

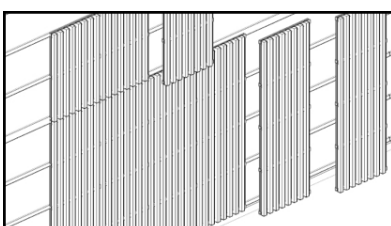
**Finishing**

Varnished natural wood veneer  
Solid varnished natural wood  
CPL Lacquered  
CPL decorative design  
For other finishes, consult

**APPLICATION**

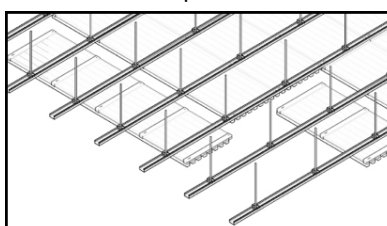
**Wall coverings**

Screwed to batten

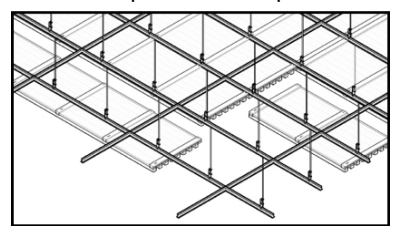


**Ceilings**

Screwed to T60 profile



Fixed with plates to T24 profiles



**Important note:** Due to the weight of some models and especially in ceiling mounting, it is essential to ensure that the structure and anchors support the weight of the panels.