

**REFERENCE** PE045  
**DESCRIPTION** Slatted panel with 20x90mm slats spaced 100mm

**ACOUSTIC FEATURES**

Slat section (mm) 20x90  
Slat spacing (mm) 100  
Panel thickness (mm) 113  
Perforated area (%) 76

**Acoustic absorption**

Plenum	$\alpha_w$	NRC	Class
19mm	0,60	0,75	C
40mm	0,80	0,80	B
40mm (+)	0,95	0,95	A
200mm	0,85	0,90	B
200mm (+)	0,95	0,90	A

Mineral Wool (integrated) 15 mm 70 kg/m<sup>3</sup>  
Additional Mineral Wool inside the plenum (+) 45 mm 21 kg/m<sup>3</sup>

**GENERAL FEATURES**

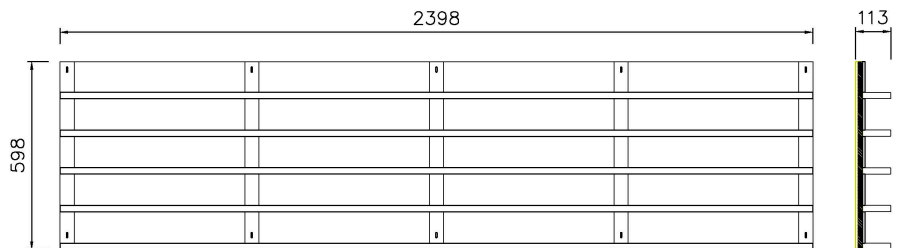
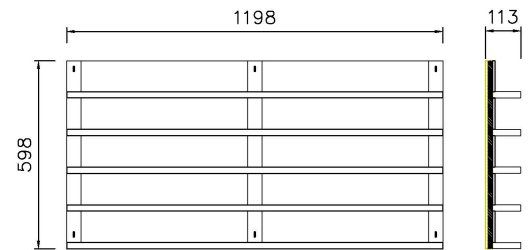
**Base material of slats**

MDF standard D-s2,d0  
MDF fireproof B-s2,d0  
Solid wood

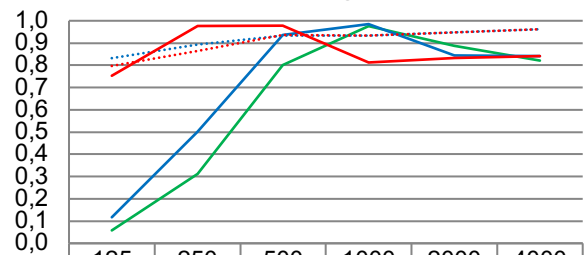
**Base material of crossies**

MDF standard D-s2,d0  
MDF fireproof B-s2,d0

For other materials and thickness, contact DECUSTIK



**Absorption according UNE-EN ISO 354**



	125	250	500	1000	2000	4000
— Plenum 19mm	0,06	0,31	0,80	0,98	0,89	0,82
— Plenum 40mm	0,12	0,50	0,94	0,99	0,85	0,84
⋯ Plenum 40mm (+)	0,83	0,89	0,93	0,93	0,95	0,96
— Plenum 200mm	0,75	0,98	0,98	0,81	0,83	0,84
⋯ Plenum 200mm (+)	0,80	0,87	0,94	0,93	0,95	0,96

Frequency [Hz]

**Weight approx. (kg/m<sup>2</sup>)**

12,6 (MDF Standard)  
14,4 (MDF Fireproof)  
12,1 (Spruce)  
12,2 (Pine)  
13,0 (Oak)

**Sizes (mm)**

For wall and ceiling  
2400x600 (2398x598 real)  
1200x600 (1198x598 real)  
Designed to install with a 2mm clearance between panels  
For other dimensions, consult

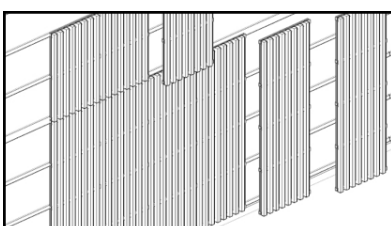
**Finishing**

Varnished natural wood veneer  
Solid varnished natural wood  
CPL Lacquered  
CPL decorative design  
For other finishes, consult

**APPLICATION**

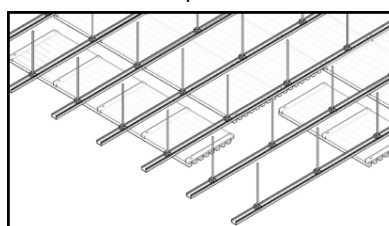
**Wall coverings**

Screwed to batten

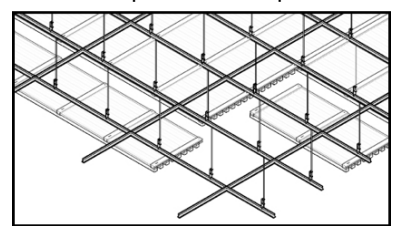


**Ceilings**

Screwed to T60 profile



Fixed with plates to T24 profiles



**Important note:** Due to the weight of some models and especially in ceiling mounting, it is essential to ensure that the structure and anchors support the weight of the panels.